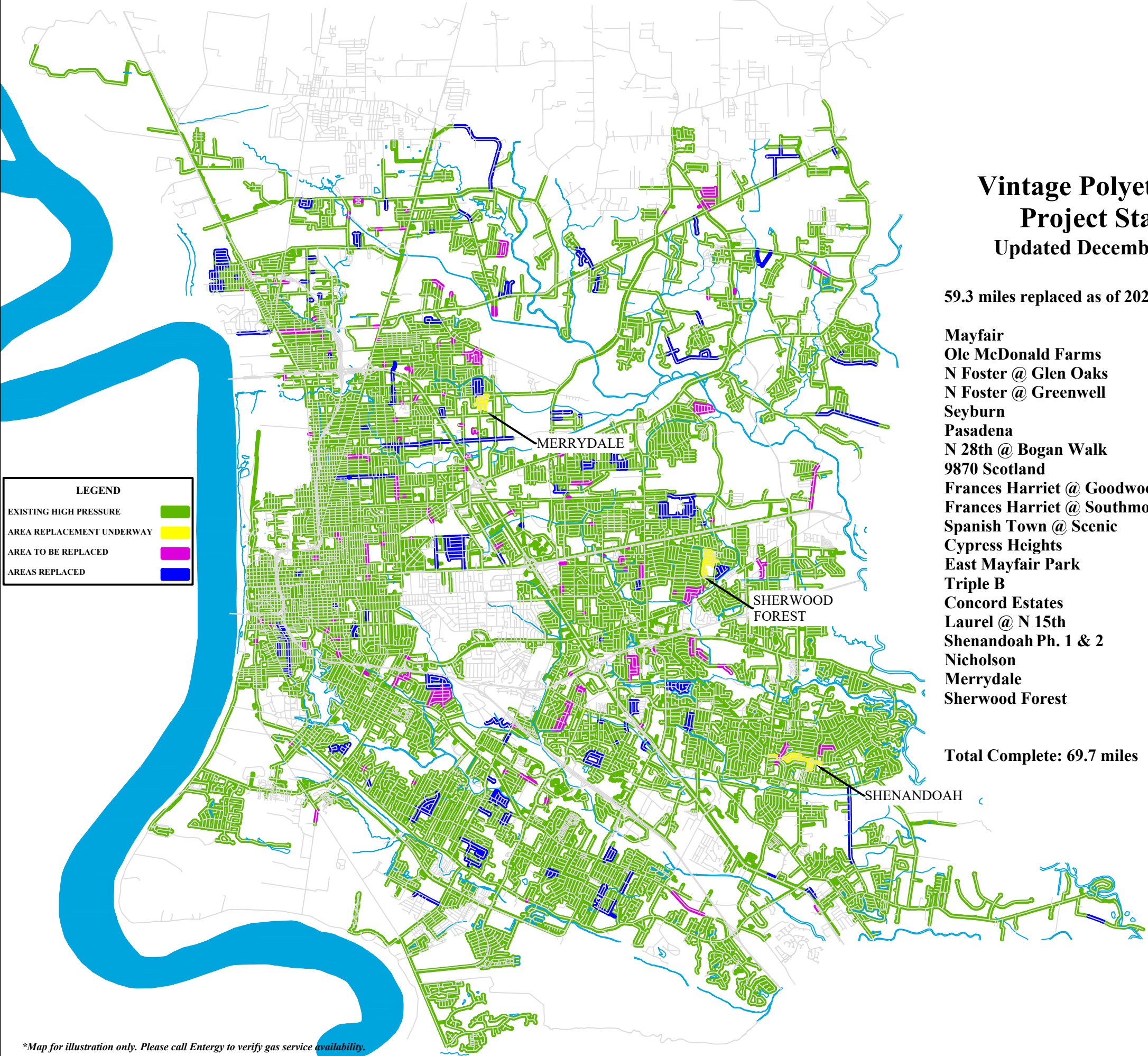


GAS REPLACEMENT INFRASTRUCTURE PROGRAM



Vintage Polyethylene Project Status Updated December 2023

59.3 miles replaced as of 2022

Mayfair	1.5 Complete
Ole McDonald Farms	0.7 Complete
N Foster @ Glen Oaks	0.1 Complete
N Foster @ Greenwell	0.3 Complete
Seyburn	0.02 Complete
Pasadena	0.07 Complete
N 28th @ Bogan Walk	0.08 Complete
9870 Scotland	0.09 Complete
Frances Harriet @ Goodwood	0.02 Complete
Frances Harriet @ Southmoor	0.04 Complete
Spanish Town @ Scenic	0.1 Complete
Cypress Heights	0.6 Complete
East Mayfair Park	0.6 Complete
Triple B	1.9 Complete
Concord Estates	1.8 Complete
Laurel @ N 15th	0.08 Complete
Shenandoah Ph. 1 & 2	0.53 Complete
Nicholson	0.06 Complete
Merrydale	1.4 In Progress
Sherwood Forest	1.8 In Progress

Total Complete: 69.7 miles

**Map for illustration only. Please call Entergy to verify gas service availability.*