

NOTES:

1. Customer facilities shall comply with Company Standards, the National Electrical Code, and authorities having jurisdiction. All material shall be suitable for outdoor use. Equipment to be installed at a location designated by the Company.
2. This installation applies to two (2) or more meters at one location.
3. Customer shall furnish and install a Company approved, lockable, non-fused disconnect switch on the supply side of the meter. The Company shall control the supply side disconnect and it shall be available 24 hours a day without notice.
4. For identification purposes, all meter sockets and utility disconnects will be plainly and permanently labeled to designate the particular apartment or office served. Each meter should have a separate cover that can be removed for repairs without disturbing other meters. See label 1-5.
5. This installation applies to two (2) or more meters at one location.
6. This installation can be adapted for underground (see D9-5) or overhead (D9-4) service.
7. A main disconnect is required for seven or more disconnects – (NEC). A main disconnect is recommended in all cases for isolation of this disconnect/meter group from any other groups served by the same transformer. Utility connection shall be made on the line side of main disconnect or junction box.
8. When installed as an underground service, the Customer shall install 80 lb non-metallic (manila or grass) pull line or bull tape in the conduit.
9. If a current transformer (CT) installation is required, see drawings D9-6 and D9-7.
10. See section 8.5 for junction box sizing and Customer supplied connectors.

911 address shall be a minimum 3" lettering marked on meter enclosure, pole, or durable material attached to pole and should be visible from street. (See section 3.4)

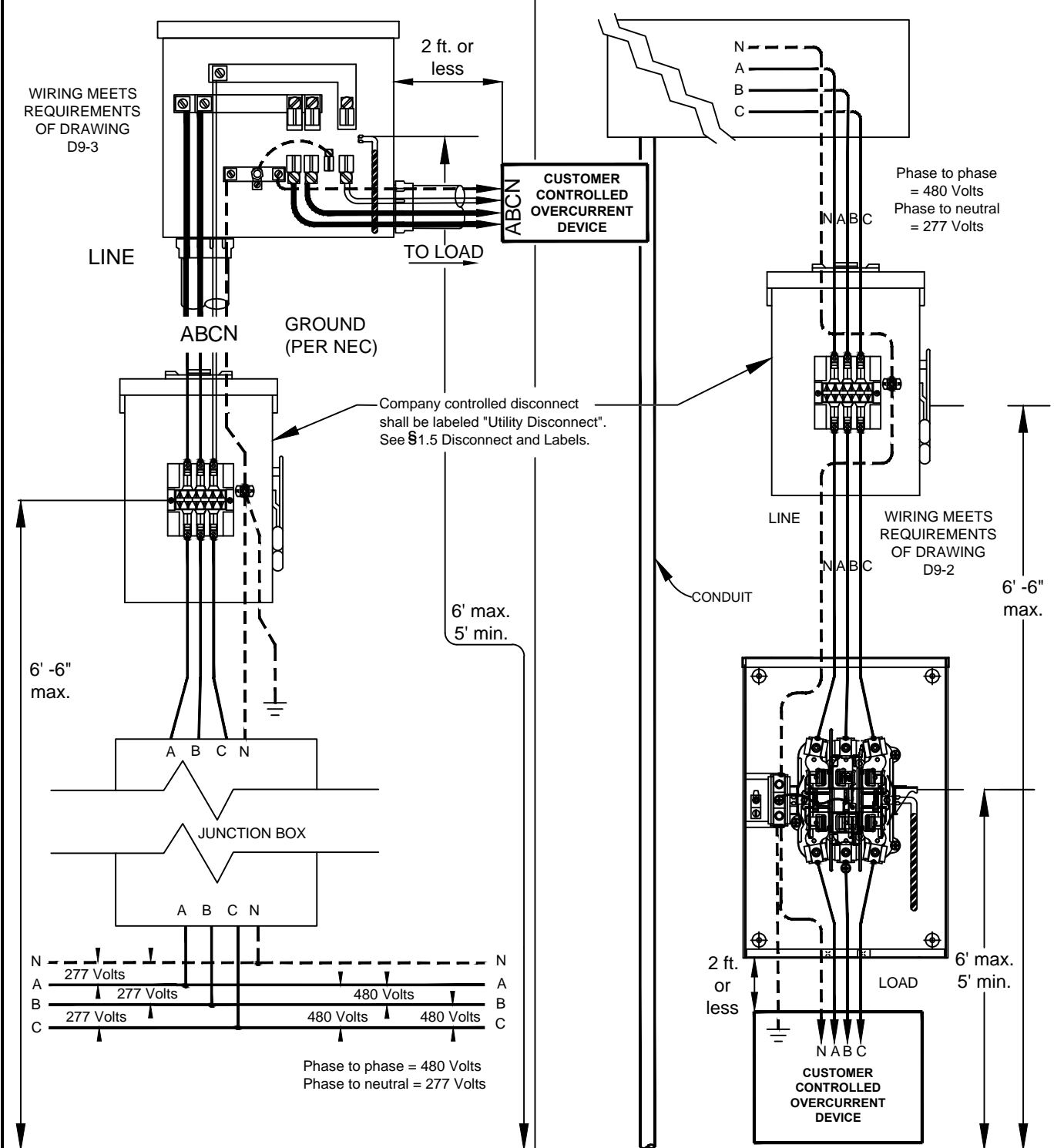
CALL 811 TWO BUSINESS DAYS BEFORE YOU DIG

In locations with underground facilities, the Customer shall notify One Call and shall have One Call locate all underground facilities before digging. It shall be the responsibility of the Customer to stay clear of all underground facilities.

2	06/15/17	Updated title, notes and added dimensions as needed.	ERG
1	01/13	REVISION FOR DRAWING SS11.6-5	JED
NO.	DATE:	REVISION	BY: APPR:

ENTERGY SERVICES, INC.	
CUSTOMER OWNED MULTIPLE METER 3Ø 277WYE/480 VOLTS SELF CONTAINED METER ARRANGEMENT	
APPROVED BY: JRH	DATE: 01/15/2013
CHECKED BY: JED	SCALE: NONE
DRAWN BY: krich95	
No. D9-12	
PLOT 1=1	SH. 1 OF 1

UNDERGROUND



- NOTES:**
1. See section 8.5 for junction box sizing and Customer supplied connectors.
 2. All 480 volt applications required to be available for Company personnel 24 hours a day without notice.
 3. Consult the Company.

ENTERGY SERVICES, INC.

**TYPICAL UNDERGROUND 3Ø 4 WIRE
277/480 INSTALLATIONS**

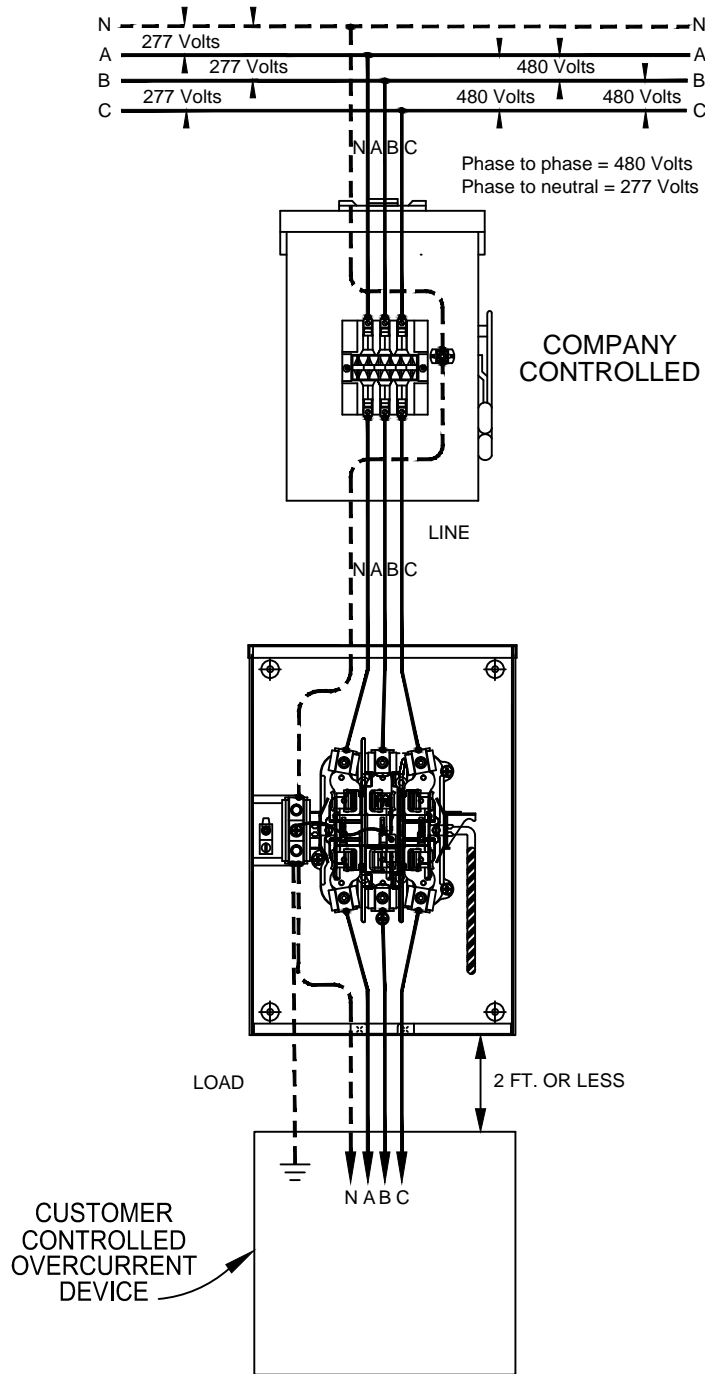
APPROVED BY: JRH	DATE: 01/15/2013
CHECKED BY: JED	SCALE: NONE
DRAWN BY: krich95	CEA NO.

No. **D9-5**

PLOT 1=1 SH. 1 OF 1

1	01/13	REVISION OF DRAWING SS11.8-5	JED	
NO.	DATE:	REVISION	BY:	APPR:

OVERHEAD



Caution:

For 480 volt service, see drawing D9-2.

For 277/480 volt service, Customer shall furnish and install a Company approved, Company lockable, non fused disconnect switch on the supply side of the meter base and a separate load side disconnect with overcurrent protection within 2 ft. of the meter.

Company shall control the supply side disconnect. It shall be labeled "Utility Disconnect" see 5.5 Labels and Disconnects and it shall be available to Company 24 hours a day without notice.

NOTES:

1. Consult the Company.

ENTERGY SERVICES, INC.

TYPICAL OVERHEAD 3 ϕ 4 WIRE
277/480 INSTALLATION

APPROVED BY: JRH

DATE: 01/14/2013

CHECKED BY: JED

SCALE: NONE

DRAWN BY: krich95

CEA NO.

No. D9-4

1	01/13	REVISION OF DRAWING SS11.8-4	JED	
NO.	DATE:	REVISION	BY:	APPR:



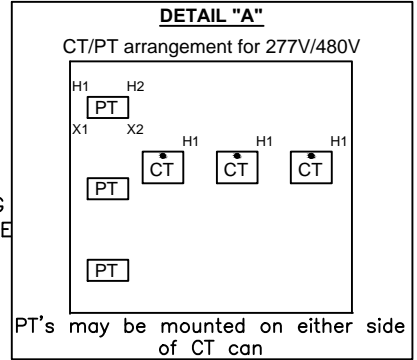
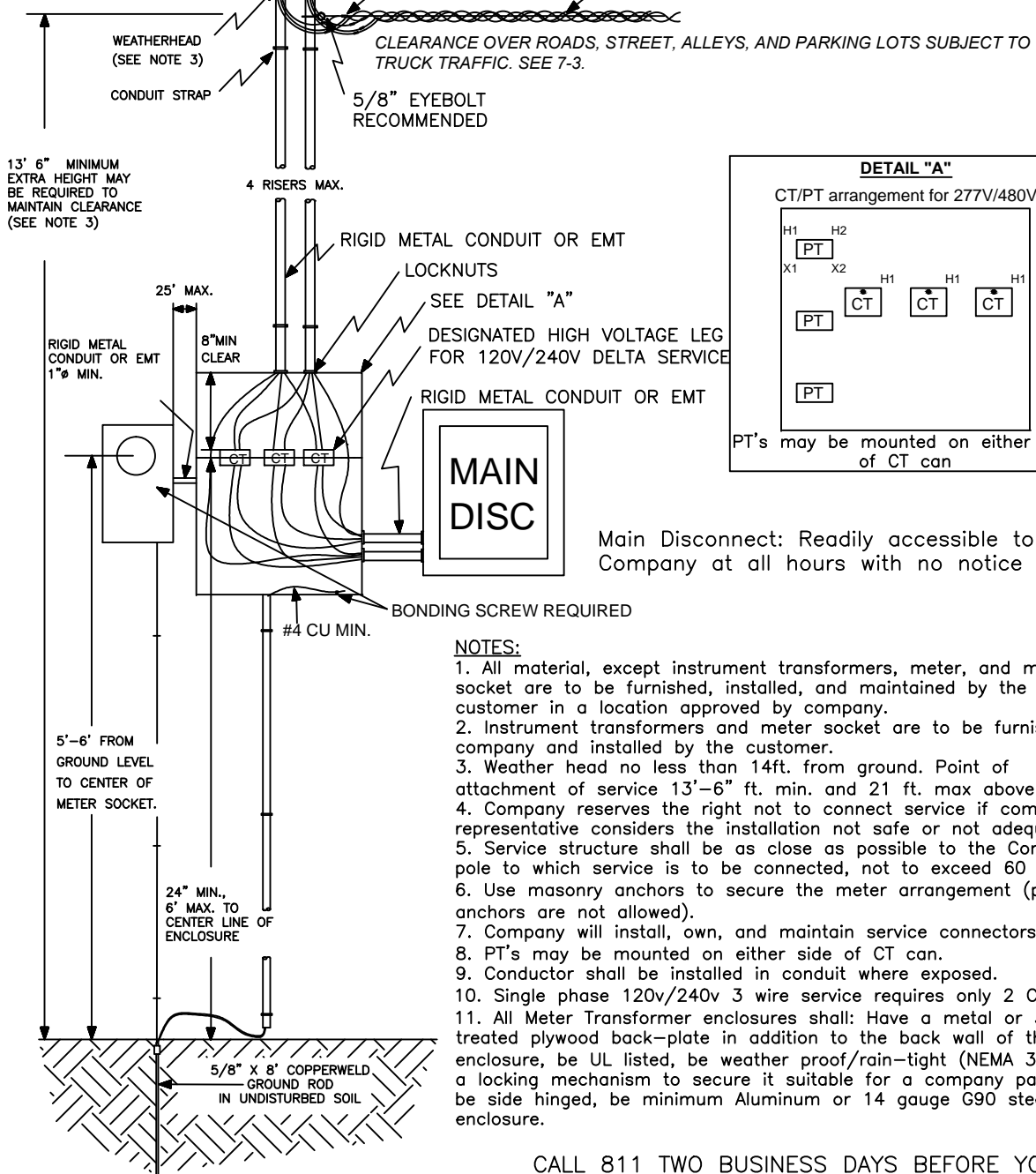
PLOT 1=1 SH. 1 OF 1

SERVICE ENTRANCE CONDUCTORS
MINIMUM LENGTH 3'
BEYOND WEATHERHEAD

DIVISION OF OWNERSHIP
AT CONNECTOR

911 address shall be a minimum 3" lettering marked on meter enclosure, pole, or durable material attached to pole and should be visible from street. (See section 3.4)

COMPANY SERVICE CABLE



Main Disconnect: Readily accessible to Company at all hours with no notice

NOTES:

1. All material, except instrument transformers, meter, and meter socket are to be furnished, installed, and maintained by the customer in a location approved by company.
2. Instrument transformers and meter socket are to be furnished by company and installed by the customer.
3. Weather head no less than 14ft. from ground. Point of attachment of service 13'-6" ft. min. and 21 ft. max above ground.
4. Company reserves the right not to connect service if company representative considers the installation not safe or not adequate.
5. Service structure shall be as close as possible to the Company pole to which service is to be connected, not to exceed 60 ft.
6. Use masonry anchors to secure the meter arrangement (plastic anchors are not allowed).
7. Company will install, own, and maintain service connectors.
8. PT's may be mounted on either side of CT can.
9. Conductor shall be installed where exposed.
10. Single phase 120v/240v 3 wire service requires only 2 CTs.
11. All Meter Transformer enclosures shall: Have a metal or 3/4" treated plywood back-plate in addition to the back wall of the enclosure, be UL listed, be weather proof/rain-tight (NEMA 3R), have a locking mechanism to secure it suitable for a company padlock, be side hinged, be minimum Aluminum or 14 gauge G90 steel enclosure.

CALL 811 TWO BUSINESS DAYS BEFORE YOU DIG

In locations with underground facilities, the Customer shall notify One Call and shall have One Call locate all underground facilities before digging. It shall be the responsibility of the Customer to stay clear of all underground facilities.

TABLE 9.1.3: GUIDELINE FOR METER TRANSFORMER ENCLOSURE WITH MULTIPLE CIRCUITS

Total Customer Conduits (4" min)	Maximum Conductor Size	Minimum Dimensions		
		Depth	Width	Height
Up to 4	600 kcmil	14"	32"	40"
Up to 6	500 kcmil	14"	32"	54"

CTs will be placed at center. Customer Conduit spaced evenly. Service connections shall not be made in an instrument transformer enclosure. For larger sizes, consult the Company.

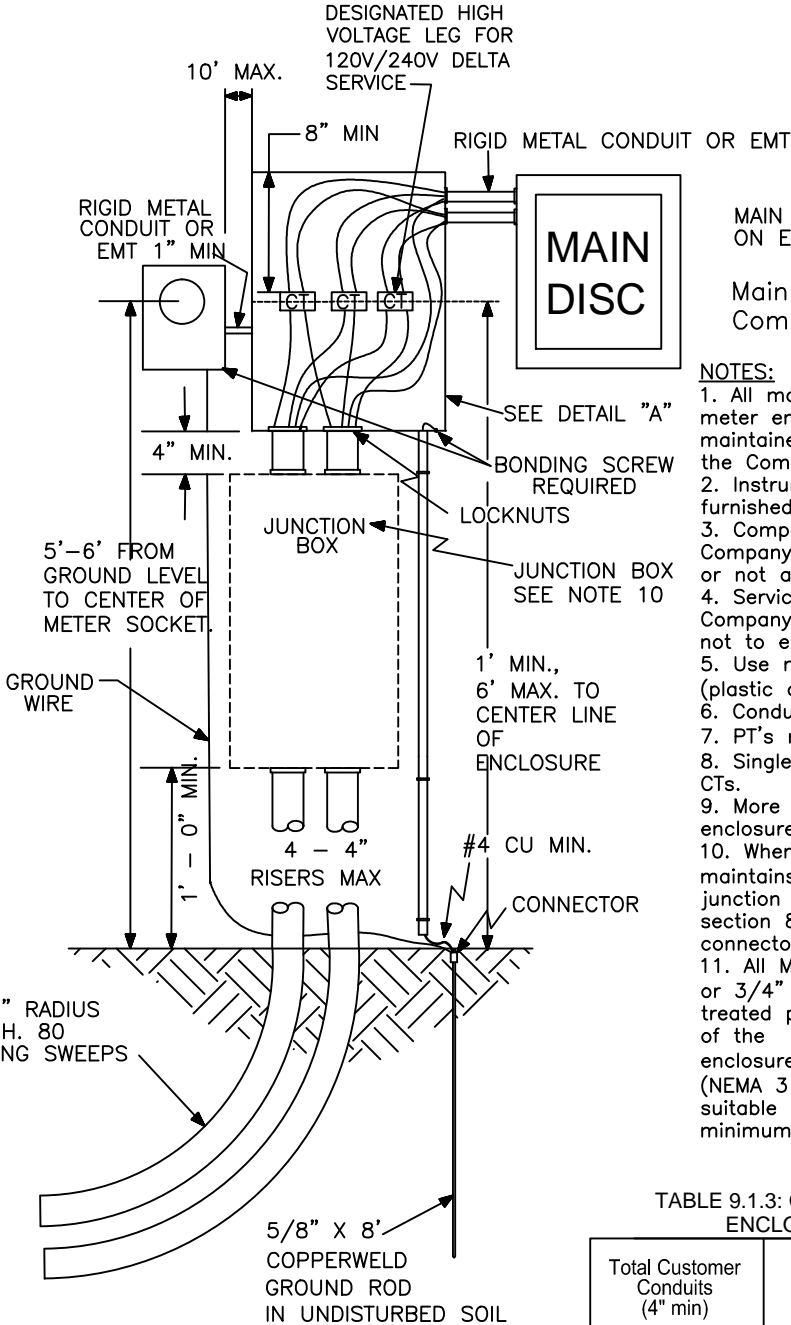
ENTERGY SERVICES, INC.			
CURRENT INSTRUMENT TRANSFORMER FOR OVERHEAD SERVICE			
APPROVED BY: JRH	DATE: 11/15/2012		
CHECKED BY: JED	SCALE: NONE		
DRAWN BY: krich95	CEA NO.		
		No. D9-6	
PLOT 1=1		SH. 1 OF 1	

2	06/15/17	Revised drawing and notes as needed.	ERG	
1	10/12	REVISION OF DRAWING SS11.8-3	JED	
NO.	DATE:	REVISION	BY:	APPR:

911 address shall be a minimum 3" lettering marked on meter enclosure, pole, or durable material attached to pole and should be visible from street. (See section 3.4)

CALL 811 TWO BUSINESS DAYS BEFORE YOU DIG

In locations with underground facilities, the Customer shall notify One Call and shall have One Call locate all underground facilities before digging. It shall be the responsibility of the Customer to stay clear of all underground facilities.



MAIN MAY BE DIRECTLY ABOVE OR ON EITHER SIDE OF CT ENCLOSURE

Main Disconnect: Readily accessible to Company at all hours with no notice

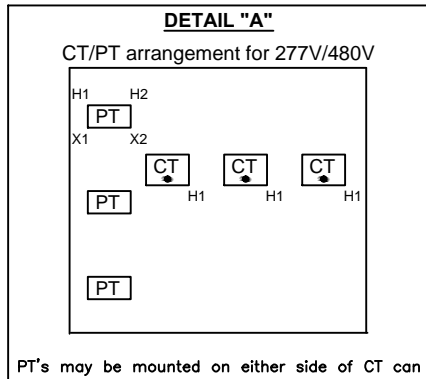
NOTES:

1. All material, except instrument transformers, meter, and meter enclosure are to be furnished, installed, and maintained by the Customer in a location approved by the Company.
2. Instrument transformers and meter enclosure are to be furnished by Company and installed by the Customer.
3. Company reserves the right not to connect service if Company representative considers the installation not safe or not adequate.
4. Service structure shall be as close as possible to the Company source to which the service is to be connected, not to exceed 150 ft.
5. Use masonry anchors to secure the meter arrangement (plastic anchors are not allowed).
6. Conductor shall be installed in conduit where exposed.
7. PT's may be mounted on either side of CT can.
8. Single phase 120v/240v 3 wire service requires only 2 CTs.
9. More than two conductors may require larger size enclosures. Consult the Company.
10. When the Customer provides, owns, installs, and maintains the cable to the Company's transformer, a junction box is not required. Consult the Company. See section 8.5 for junction box sizing and Customer supplied connectors.
11. All Meter Transformer enclosures shall: Have a metal or 3/4" treated plywood back-plate in addition to the back wall of the enclosure, be UL listed, be weather proof/rain-tight (NEMA 3 r), have a locking mechanism to secure it suitable for a company padlock, be side hinged and be minimum Aluminum or 14 gauge G90 steel enclosure.

TABLE 9.1.3: GUIDELINE FOR METER TRANSFORMER ENCLOSURE WITH MULTIPLE CIRCUITS

Total Customer Conduits (4" min)	Maximum Conductor Size	Minimum Dimensions		
		Depth	Width	Height
Up to 4	600 kcmil	14"	32"	40"
Up to 6	500 kcmil	14"	32"	54"

CTs will be placed at center. Customer Conduit spaced evenly. Service connections shall not be made in an instrument transformer enclosure. For larger sizes, consult the Company.



ENTERGY SERVICES, INC.

CURRENT INSTRUMENT TRANSFORMER FOR UNDERGROUND SERVICE

APPROVED BY: JRH DATE: 02/26/2013

CHECKED BY: JED SCALE: NONE

DRAWN BY: krich95 CEA NO.

2	06/15/17	Revised drawing and notes as needed.	ERG
1	02/13	REVISION OF DRAWING SS11.8-4	JED
NO.	DATE:	REVISION	BY: APPR:

No. D9-7

PLOT 1=1 SH. 1 OF 1